

C TRACK (RAIL)

C Track is our solution for hanging artworks when you absolutely can't fix to the wall, for example when you need to protect wooden panelling. It is slim, just 16.5 mm wide, and provides a simple and clean fixing point to hang artworks from the ceiling.

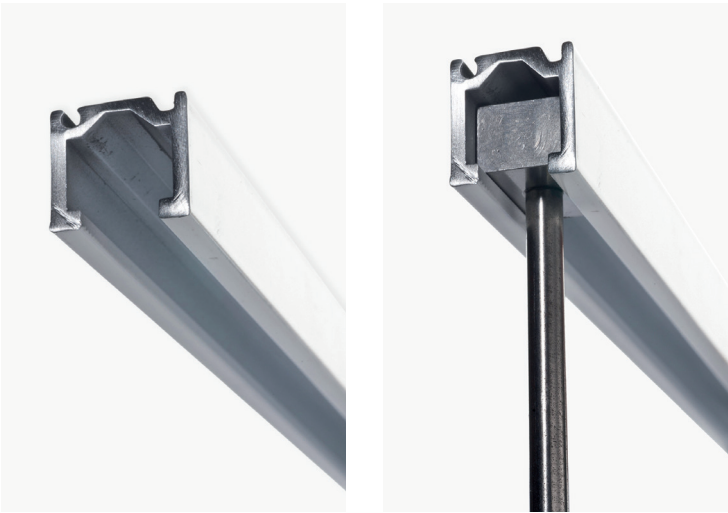
For a flush finish, C Track installation detailing should occur whilst the ceiling is being designed, and installed during construction.

Alternatively, C Track can also be surface mounted as a project requires. Artworks can then be hung at any position along the track using a choice of translucent Cord, Stainless Steel Cable or Stainless Steel Rod.

As the track is installed into the ceiling, top blocks are inserted through a mouth opening on the underside of the track.

CODE:
H6300

Scan for
more info:



C Track in situ installed into a wooden ceiling.

PRODUCT SPECIFICATION

Function	Artwork hanging track (rail) system.
Dimensions	16.5mm width x 15mm vertical height. Sold in 2.5m lengths.
Loading	Fixings must be into hardwood or metal for maximum support. The standard fixing (300mm) will support artworks up to 15kgs when hung on two suspended supports. When fixed securely at 150mm centres, the track can support artworks up to 25kgs in weight when hung on two suspended supports.
Material	Anodised aluminium extrusion (available in either Silver or powder coated White).
Finish	<input checked="" type="radio"/> <input type="radio"/>
Customise	Available in bespoke RAL colours

