

H TRACK (RAIL)

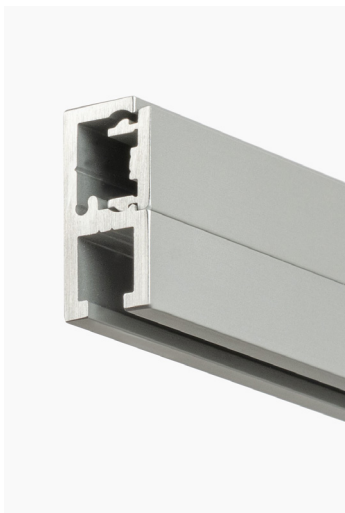
H Track is our best selling track system and is designed to be fitted to existing walls. When used in conjunction with H Track Cover and fixed at a high level, the H Track blends effortlessly with the ceiling junction or mouldings and provides a stable point from which to hang artworks without having to attach them directly to the wall, ideal for when an existing wall should not be drilled or marked when hanging, as well as where artworks are changed frequently for exhibitions.

This track is slim, discreet and strong, suitable for use in almost any setting from museums and galleries to large and small offices, private residences, hospitality venues and even historic palaces.

The top blocks are inserted through a mouth now positioned at the bottom of the track, for easy installation of artworks,

CODE:
H6000

Scan for
more info:



Fulham Palace, London, UK.

PRODUCT SPECIFICATION

Function	Artwork hanging track (rail) system.
Dimensions	13.5mm width x 28.5mm vertical height. Sold in 2.5m lengths.
Loading	Fixings must be into hardwood for maximum support. The standard fixing (300mm) will support artworks up to 150kgs when hung on two suspended supports. Heavier loads possible, please contact us for advice.
Material	Anodised aluminium extrusion (available in either Silver or powder coated White).
Finish	<input checked="" type="radio"/> <input type="radio"/>
Customise	Available in bespoke RAL colours.

