

T TRACK (RAIL)

T Track is highly discreet, designed to be recessed above a wall liner and, or fabric, joinery or wall panels, and tight against the ceiling, or under a cornice. This provides an architectural transition that is flush with the lower wall.

T Track should be considered and specified pre-construction as installation considerations should occur prior to plaster board, other wall liners or cornice work. It can be fitted during construction, or a clean reveal can be

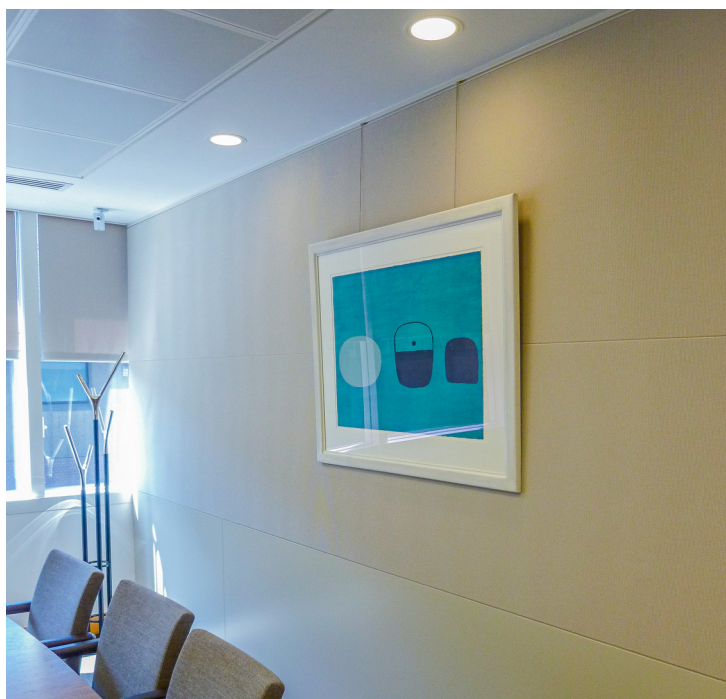
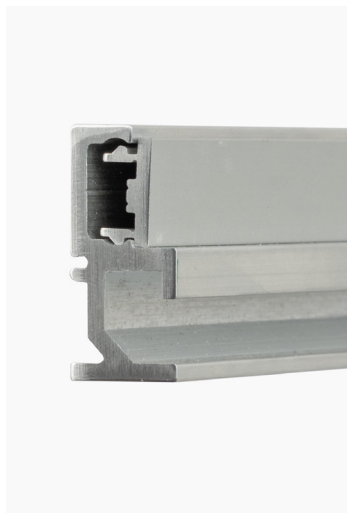
prepared for an after construction fit.

This track can also be built out to occur over deeper fabric wrapped or other material panels. We recommend the T Track Cover to ensure a clean finish.

The top blocks are front loading and slot into place, making this a quick, easy and convenient track when installing or changing artworks.

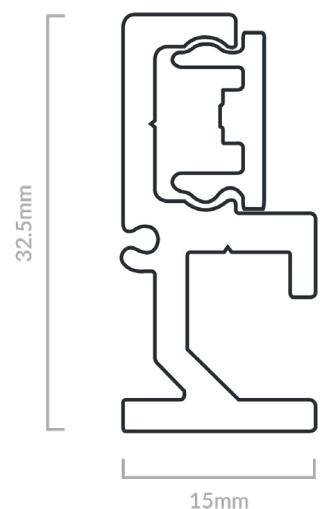
CODE:
H6200

Scan for
more info:



PRODUCT SPECIFICATION

Function	Artwork hanging track (rail) system.
Dimensions	15mm width x 32.5mm vertical height. Sold in 2.5m lengths
Loading	Fixings must be into hardwood or metal for maximum support. The standard fixing (300mm) will support artworks up to 150kgs when hung on two suspended supports.
Material	Anodised aluminium extrusion (available in either Silver or powder coated White).
Finish	<input checked="" type="radio"/> <input type="radio"/>
Customise	Available in bespoke RAL colours.



Recruitment company offices, Barbican, London, installed above fabric panels.